

UNIX

contract collection

made for business

ATLANTEX & ATLANTEX ASC

Vertical & Roller Blind Fabric Specification

ATLANTEX

FIRE RETARDANT

ANTI-MILDEW COATING

ATLANTEX ASC

FIRE RETARDANT

ANTI-MILDEW COATING

ADVANCED SOLAR CONTROL COATING

ATLANTEX & ATLANTEX ASC

Vertical & Roller Blind Fabric Specification

Atlantex



Atlantex asc

KEY FEATURES:

- Fabric composition:** 100% Polyester
- Fire retardancy:** Conforms to; EN 13773 : 2003 Class 1; BS5867 - 2, Type B : 2008 for fire retardancy when tested in accordance with BS5438 : 1989
- Shading:** Atlantex: Dimout - Recommended for computer environments
Atlantex asc: Dimout & Reflective - Recommended for computer environments
- Moisture resistance:** Acticide Coated - Recommended for moist conditions

STANDARD SPECIFICATIONS:

- Colour range:** 19
- Louvre widths available:** 89mm (3^{1/2}"); 127mm (5")
- Roller fabric width:** 200cm: nominal
- Typical fabric weight:** 240gsm - (+/-10) : 255gsm - (+/-10)
- Fabric thickness:** 0.50mm; nominal
- Colourfast:** Conforms to: BS5867 - 1 : 2004 for light fastness to Grade 6 minimum when tested in accordance with ISO 105 - B02 : 1999
- Care instructions:** Wipe with damp sponge; Do not wash; Do not tumble dry; Do not Dry Clean: Do not iron

ATLANTEX

| Colour | %Heat | | %Light | | S-C |
|--------------|-------|----|--------|----|------|
| | T | R | T | R | |
| Aubergine | 3 | 22 | 0 | 13 | 0.68 |
| Beige | 15 | 65 | 13 | 70 | 0.33 |
| Blue | 8 | 45 | 3 | 39 | 0.49 |
| Brown | 3 | 30 | 1 | 26 | 0.61 |
| Cherry | 3 | 22 | 0 | 13 | 0.68 |
| Cream | 19 | 71 | 19 | 80 | 0.28 |
| Dark Beige | 8 | 50 | 6 | 53 | 0.45 |
| Dark Blue | 5 | 26 | 0 | 10 | 0.65 |
| Fresh Apple | 13 | 55 | 10 | 58 | 0.41 |
| Grey | 1 | 15 | 0 | 16 | 0.74 |
| Hunter Green | 2 | 23 | 0 | 15 | 0.67 |
| Lime | 10 | 46 | 8 | 34 | 0.48 |
| Muted Gold | 11 | 51 | 3 | 39 | 0.44 |
| Navy | 5 | 26 | 0 | 9 | 0.65 |
| Silver | 11 | 51 | 8 | 55 | 0.44 |
| Stone | 13 | 79 | 10 | 89 | 0.20 |
| Taupe | 10 | 47 | 1 | 29 | 0.47 |
| Vanilla | 18 | 70 | 19 | 81 | 0.29 |
| White | 18 | 74 | 16 | 84 | 0.25 |

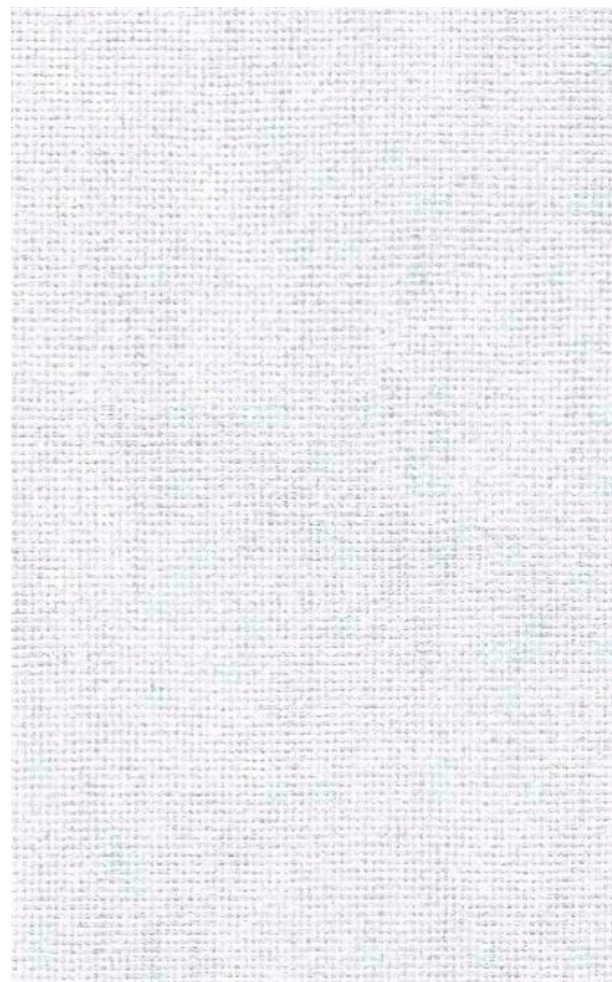
ATLANTEX ASC

| Colour | %Heat | | %Light | | S-C |
|--------------|-------|----|--------|----|------|
| | T | R | T | R | |
| Aubergine | 1 | 36 | 0 | 36 | 0.56 |
| Beige | 14 | 66 | 12 | 71 | 0.32 |
| Blue | 5 | 51 | 1 | 49 | 0.43 |
| Brown | 3 | 69 | 0 | 80 | 0.27 |
| Cherry | 3 | 69 | 0 | 13 | 0.27 |
| Cream | 16 | 76 | 14 | 85 | 0.23 |
| Dark Beige | 7 | 70 | 5 | 80 | 0.27 |
| Dark Blue | 3 | 68 | 0 | 78 | 0.28 |
| Fresh Apple | 12 | 60 | 8 | 63 | 0.36 |
| Grey | 0 | 28 | 0 | 33 | 0.62 |
| Hunter Green | 2 | 37 | 0 | 33 | 0.55 |
| Lime | 9 | 71 | 6 | 81 | 0.26 |
| Muted Gold | 10 | 58 | 2 | 50 | 0.38 |
| Navy | 3 | 68 | 0 | 78 | 0.28 |
| Silver | 9 | 72 | 8 | 82 | 0.26 |
| Stone | 16 | 74 | 15 | 84 | 0.25 |
| Taupe | 10 | 55 | 1 | 43 | 0.41 |
| Vanilla | 16 | 76 | 14 | 85 | 0.23 |
| White | 13 | 78 | 13 | 87 | 0.21 |

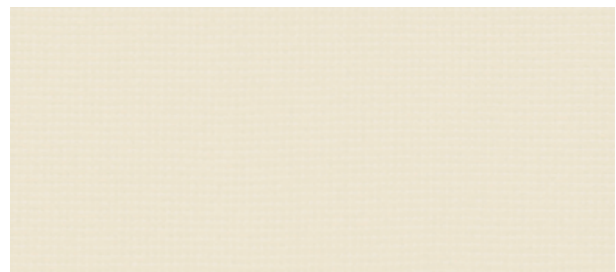
T = Transmitted : R = Reflected : S-C = Shading Co-efficient. Shading Co-efficients are expressed as a decimal between 0 and 1. The lower the figure, the higher the shading efficiency of the blind.

This data is based on: Tests conducted using double glazed 6mm float glass with 12mm air space. Blinds are fully closed. Shading co-efficients are calculated for radiation at normal incidence. Standard U value is 2.75 W/M2K = 0.49Btu/ft2hx°F.

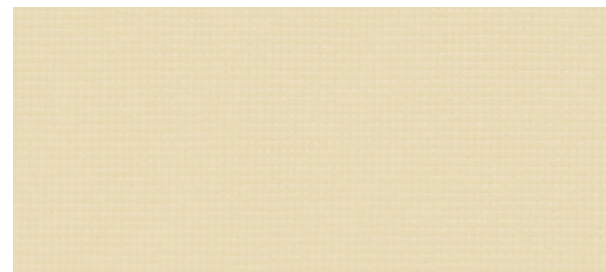
Important: Performance data has been compiled with great care using the latest techniques. However it is advisable to check actual suitability of fabrics for a particular application before use. In line with Eclipse's commitment to product development, specifications may be subject to change without notice.



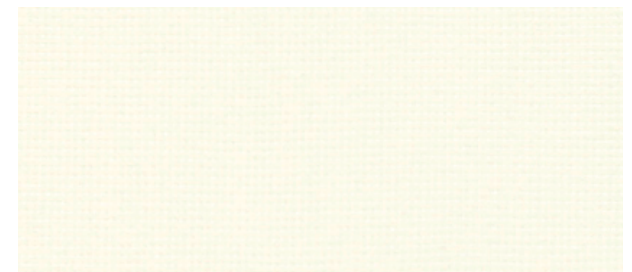
Atlantex White



Cream



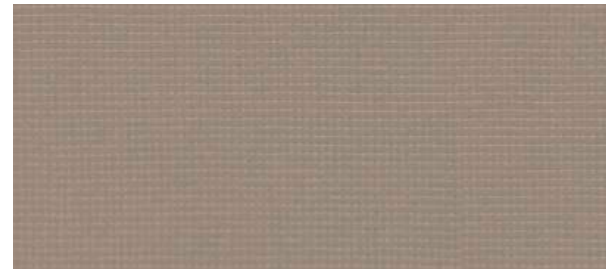
Beige



Vanilla



Dark Beige



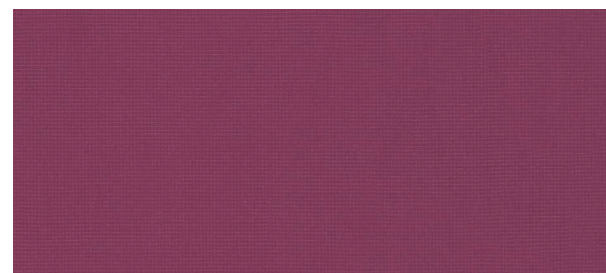
Taupe



Muted Gold



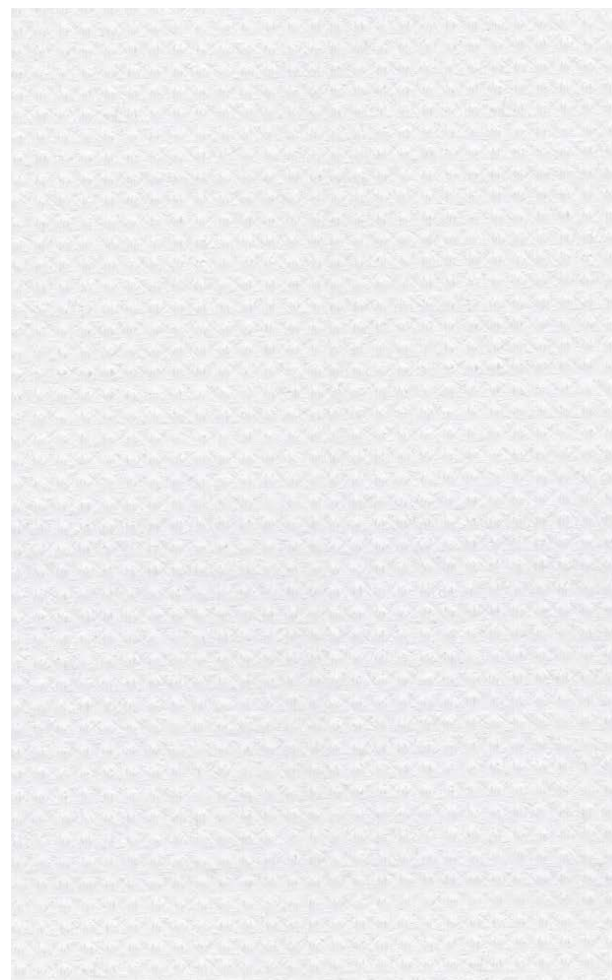
Brown



Aubergine



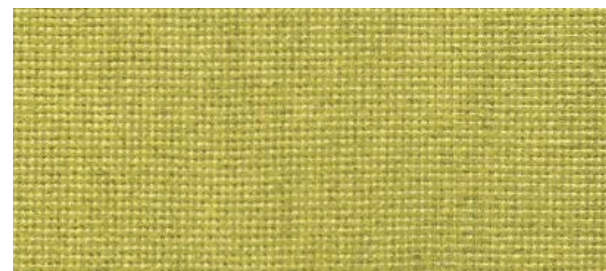
Cherry



Atlantex asc White



Fresh Apple



Lime



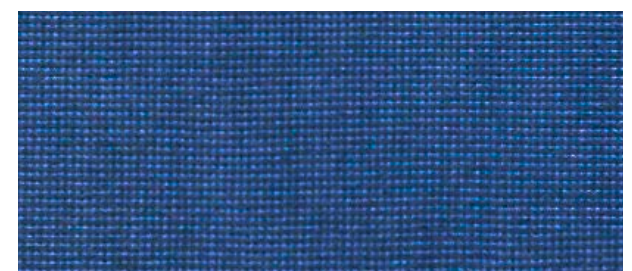
Hunter Green



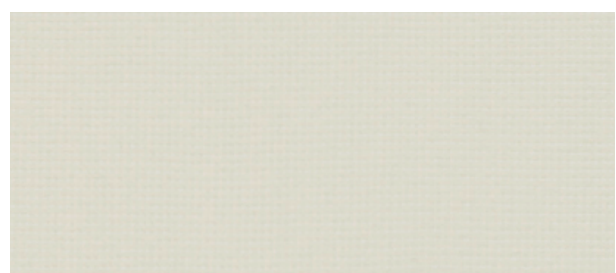
Blue



Navy



Dark Blue



Stone



Grey



Silver